

PinPointR

Detect, Avoid, and Map Underground Utilities



Ground Penetrating Radar Utility Locator

The ImpulseRadar PinPointR is a dedicated Ground Penetrating Radar (GPR) utility locator instrument. The PinPointR has been developed to maximize in-field productivity by utilizing ImpulseRadar's innovative real-time sampling (RTS) dual-channel antenna technology, which provides incredible bandwidth, speed, and resolution, all controlled wirelessly via an intuitive Android-driven user interface.

PinPointR

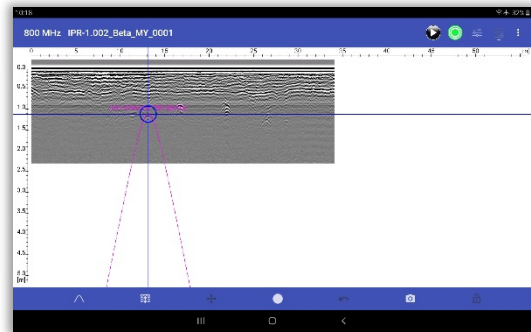
The ImpulseRadar Advantage

The ImpulseRadar PinPointR offers a clear and dependable way to quickly and easily locate, avoid or map underground utilities with the functionality required to meet approved industry standards, whilst offering market-leading performance and data quality.

The enhanced bandwidth of the PinPointR antenna provides resolution beyond that of any single-channel GPR system for the detection of near-surface utility targets and other internal reflectors of interest, as well as deeper utility targets with maximum depth penetration.

To maximize in-field productivity, PinPointR includes the features and functionality you use day to day in real-world scenarios. Consequently, PinPointR offers complete flexibility for collecting either single line profiles, or multi-line projects with user-defined lengths and profile spacing to suit actual site conditions and your specific utility locate objectives.

The Android data acquisition App includes industry standard marker functionality (APWA, AS5488, or user-defined) to enable users to mark-up data in the field to correlate with the actual paint marks they put on the ground and any subsequent field sketches or report outputs.



KEY FEATURES

- ImpulseRadar RTS-based antenna technology
- Dual-channel operation
400 MHz (LF) & 800 MHz (HF)
- Android-driven interface
- Wireless data acquisition
- Internal data security
- Integrated GPS, with external GPS support (NMEA 0183 protocol)
- Impressive 7-hour battery life
- No survey speed limitation

TECHNICAL SPECIFICATIONS

Central Frequency	400 MHz & 800 MHz (dual-channel)
Detection Depth	Up to 6 m / 20 ft
Acquisition Speed	>130 km/h or 81 mph (@5 cm point interval)
Scan Interval	User defined
Positioning	Wheel encoder, internal GPS, or external GPS (NMEA 0183 protocol)
Environmental	IP65
Weight	20kg (Cart, Antenna, and display)
Battery	Li-Ion 12V / 1.3 A. Up to 7-hours operating time
Operating Temperature	-20°C to +50°C / -4°F to +122 °F
Warranty	2 years
Regulatory	CE, FCC & IC approved

ImpulseRadar products are under continuous development and we reserve the right to change specifications at any time and without prior notice. You may verify product specifications at any time by contacting our headquarters via our website.